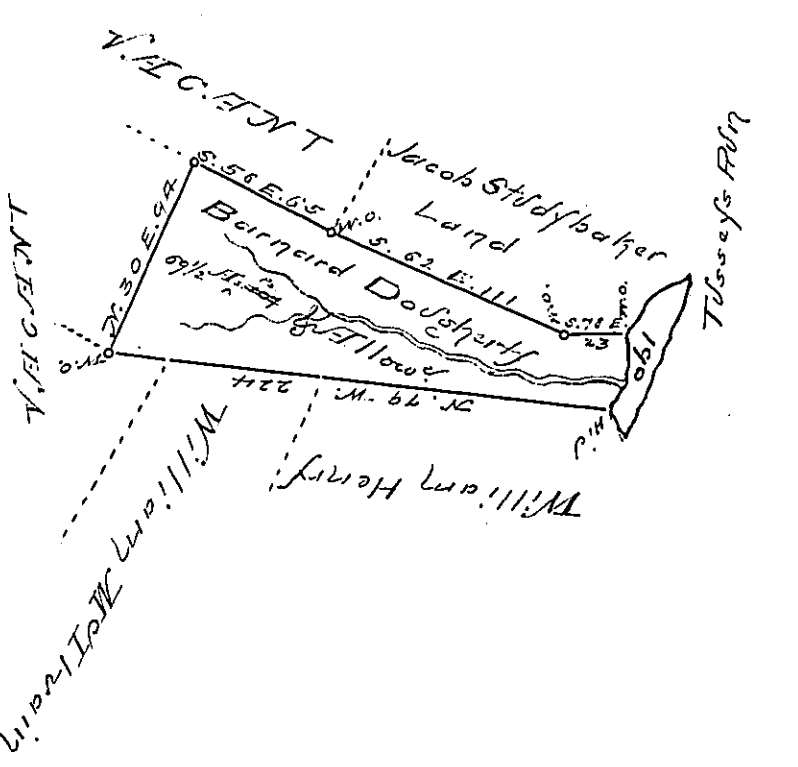


Courses & Distances
down the Run
from the W.O. to the Hick
S. 23 E. 10 ps.
S. 37 W. 10
S. 5 E. 12 Total 32 ps.
to Hick.



Situated on Dupes Run called the Big Lick
Bottom in the Township and County of Bedford
Containing Sixty ^{nine} Acres and ~~one hundred~~ ^{eighty nine}
~~and some perches~~ and the allowance of six
Pc. Cent for Roads &c.

Surveyed by Richard Tea February 1st 1766
and Resurveyed August 19th 1791, In Pursuance
of a Warrant granted to Barnard Dougherty
Dated May 27th 1763.

To
Daniel Brodhead Esq. George Woods Sec.

IN TESTIMONY that the above is a copy of the original remaining on file in the
Department of Internal Affairs of Pennsylvania, made con-
formably to an Act of Assembly approved the 16th day of
February, 1833. I have hereunto set my Hand and caused
the Seal of said Department to be affixed at Harrisburg, this
— seventh — day of — April — 1896.

James W. Latta
Secretary of Internal Affairs.